

Chemical waste

All full range accessories are available for our bottle traps and drip cup fittings. Our bottle traps are designed to be adaptable for use on either Metric or Imperial pipe size and incorporate an adjustable height by the use of a sliding tube on the neck of the fitting. Compared with competitor's products this feature gives installers greater flexibility on installation and can also reduce the time and cost of installation considerably.

Chemical Waste

6008 Standpipe for waste fitting
457 mm long



6013 Outlet adaptor
for 6003/6023, to give
1 1/4" male connection
1 1/2" outlet



6007 Standpipe for waste fittings
200 mm long



6010 Waste fitting
70 mm flange
1 1/2" outlet
(110 mm long)



6005 Waste fittings
85 mm flange
1 1/2" outlet
(110 mm long)



6015 Waste fitting
with overflow assembly and banjo
70 mm flange



6011 Waste fitting
with overflow assembly and banjo
85 mm flange



6011-24 24" Waste fitting
with overflow assembly and banjo
85 mm flange
Overflow tube has longer
dimensions (24")



Chemical waste

BROEN-LAB chemical waste products are specifically designed to enhance the appearance of modern work tops fitted in today's laboratories. Manufactured from polypropylene, they give a high resistance to most of the chemicals currently used in laboratories.

The standard range of fittings are finished in polished black. However, to special order, the drip cups can be supplied in a variety of colours. Standard items are normally available on an ex-stock basis, BROEN-LAB chemical waste products are not only competitively priced but produce to a high standard of quality control (ISO 9001).

Chemical Waste

6000 Large oval drip cup

(84 mm x 240 mm cut-out)

1 1/2" outlet



6001 Small oval drip cup

(84 mm x 162 mm cut-out)

1 1/2" outlet



6002 Small circular drip cup

(90 mm dia cut-out)

1 1/2" outlet



6014 Large circular drip cup

(144 mm dia cut-out)

1 1/2" outlet



6023 Anti-syphon bottle trap

Adjustable height neck - requires adaptor 6009, 6012 or 6013 to connect to pipework.



6003 Bottle trap

(not anti-syphon) adjustable height neck - requires adaptor 6009, 6012 or 6013 to connect to pipework.



6012 Outlet adaptor

for 6003/6023, to suit 40 mm OD pipe.



6018 Slotted waste fitting

85 mm flange with large size back nut



6009 Outlet adaptor

for 6003/6023, to suit 38 mm OD pipe.



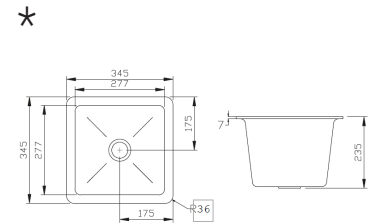
Sinks and waste

Sink

Injection moulded from polypropylene copolymer resin, with a self-draining base. This square PP sink blends well into any laboratory work-bench. Extremely durable.

97B0350	Black
97B0350W	White

Remember to order 97B0073 or 97B0073W for waste connection

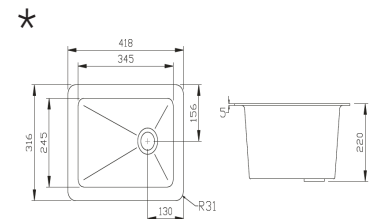


Sink

Injection moulded from polypropylene copolymer resin, with a self-draining base. Designed for mounting on top or underside of the work benches.

97B0420	Black
---------	-------

Remember to order 97B0073 for waste connection

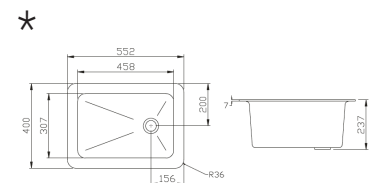


Sink

The rectangular sink with its self draining base are injection moulded from polypropylene copolymer resin. Designed for mounting on top or underside of work benches.

97B0552	Black
97B0552W	White

Remember to order 97B0073 or 97B0073W for waste connection

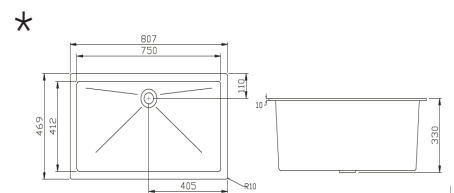


Sink

The largest polypropylene sink offered, it is suitable for cleansing of larger items. Very widely used in island benches and teacher benches.

97B0810	Black
---------	-------

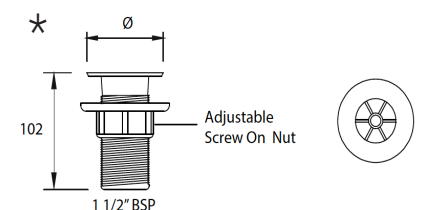
Remember to order 97B0085 for waste connection



Sink

Waste for sinks. Including adjustable screw on nut

97B0073	Black, Ø73
97B0073W	White, Ø73
97B0085	Black, Ø85



* Measurements can vary due to material property in the molding and cooling process. We don't recommend cutting until sinks have been received and measurements have been checked. PP-material have a high chemical resistance and therefore glue can't be used as fastening method.